

# SWIT®

## 1500nits 1,000,000:1

2304 Local Dimming Zones



### BM-U325MD

### 31.5" UHD 4K/8K HDR Mini-LED Monitor

## Features

### 31.5-inch UHD Mini-LED & QLED Panel

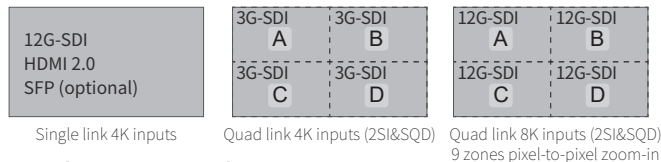
3840x2160, 10-bit, 2304 zones local dimming Mini-LED backlight with Quantum Dot QLED technology, 1500nits high bright and 1,000,000:1 high contrast ratio. Full viewing angle H/V 178/178.

### Wide Color Gamut, Class A Eye Protect

Color Gamut: 100% Rec.709; 100% DCI-P3; 79% Rec.2020. The VICO (Visual Health and Comfort) testing scores 1.97, A class, to protect your eyes from long time video editing or broadcast studio productions.

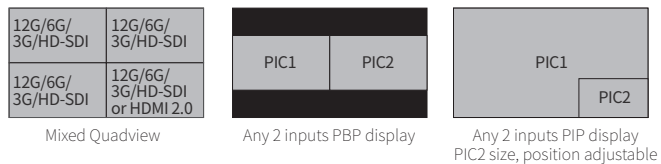
### 4K/8K UHD Inputs

12G-SDI, 4x3G-SDI 4K, 4x12G-SDI 8K, HDMI 2.0 and SFP (12G/ST.2110) input (Optional)



### Quadview, PBP and PIP

4x input sources mixed formats quadview with independent Waveforms/Audio meters/Gamma/Color Gamut/UMD settings, and 2x input sources Pic-by-Pic or Pic-in-Pic display.

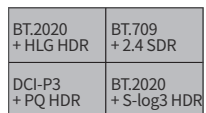


### HDR/Color Gamut selection, Payload ID auto setting

Gamma 1.0/1.8/2.2/2.4/2.6 or HLG/PQ/Slog3 HDR selection; BT.709, DCI-P3, BT.2020 selection; Payload ID auto set input range, color space, HDR/SDR, color gamut, color depth, etc.

### Multi Color Gamut & EOTF Viewing

1 input source copied to 4 windows and display different HDR/SDR and color gamut simultaneously.



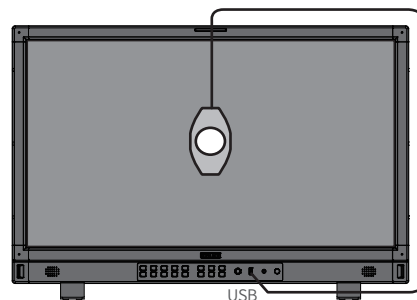
HDR/SDR simultaneously view

### 18-bit Processing / Zero Latency

Internal 18-bit signal processing, and less than 0.01 frames audio/video latency for post productions.

### 3DLUT Auto Self-Calibration

Built-in calibration software, supports X-rite i1 and JETI Specbos 1211 probes directly plug into monitor USB port to auto calibrate. Calibration time: X-rite i1: 15min; Specbos1211: 45min. Calibration result:  $\Delta E < 1.0$

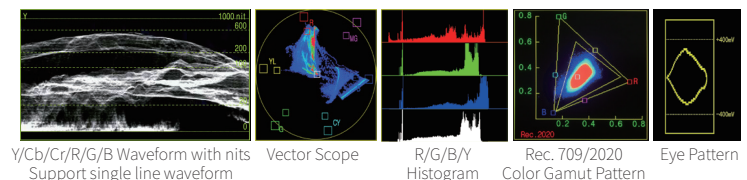


Built-in 3DLUT calibration software, Directly connect color sensor probe to monitor USB port, and the monitor will calibrate itself automatically.

### Delog 3DLUTs & User 3DLUTs Upload

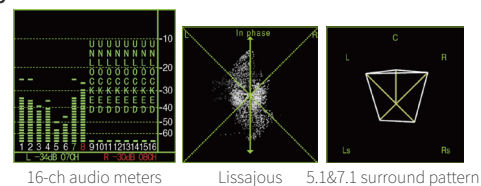
With built-in De-log LUTs including Log-C, S-log2, S-log3, C-log, V-log and RedLogFilm LUTs, to convert Log video to 709 SDR or HLG/PQ HDR. Support User 3DLUTs upload by USB.

### Video Assist Patterns



### Audio Assist Patterns

16-ch audio meters, and select any 2-ch to output via 3.5mm or speakers; Support Lissajous and 5.1/7.1 surround patterns.



### Others

Focus assist, R/G/B/mono, False color, Zebra, H/V delay, Freeze; 15:9, 14:9, 13:9, 4:3, 2.35:1, 2:1, 1.85:1 and User defined markers; Support TSL 3.1/4.0 UMD and text TALLY display; GPI control and webserver IP control, USB firmware updates.



## BM-U325MD

- ◆ 2304 local dimming zones Mini-LED
- ◆ 1500nits and 1,000,000:1 HDR
- ◆ 12G-SDI 4-in 4-out, 8K Input Ready
- ◆ Quadview/Pic-by-Pic/Pic-in-Pic
- ◆ 3DLUT Self-calibration,  $\Delta E < 1.0$

## Video Formats

### SDI 1/2/3/4 IN/OUT, SDI via SFP (Optional)

4096×2160p (60 / 59.94 / 50 / 30 / 29.97 / 25 / 24 / 23.98)  
 3840×2160p (60 / 59.94 / 50 / 30 / 29.97 / 25 / 24 / 23.98)  
 2048×1080p (60 / 59.94 / 50 / 30 / 29.97 / 25 / 24 / 23.98)  
 2048×1080i (50 / 59.94 / 60)  
 1080p (60 / 59.94 / 50 / 30 / 29.97 / 25 / 24 / 23.98)  
 1080i (60 / 59.94 / 50)  
 1080psf (30 / 29.97 / 25 / 24 / 23.98)  
 720p (60 / 59.94 / 50)  
 480i (59.94) 576i (50)

### 4K Quad-link SDI IN/OUT (each channel)

2048×1080p (60 / 59.94 / 50 / 30 / 29.97 / 25 / 24 / 23.98)  
 1080p (60 / 59.94 / 50 / 30 / 29.97 / 25 / 24 / 23.98)

### 8K Quad-link SDI IN/OUT (each channel)

4096×2160p (60 / 59.94 / 50 / 30 / 29.97 / 25 / 24 / 23.98)  
 3840×2160p (60 / 59.94 / 50 / 30 / 29.97 / 25 / 24 / 23.98)

### HDMI IN

4096×2160p (60 / 59.94 / 50 / 30 / 29.97 / 25 / 24 / 23.98)  
 3840×2160p (60 / 59.94 / 50 / 30 / 29.97 / 25 / 24 / 23.98)  
 1080p (60 / 59.94 / 50 / 30 / 29.97 / 25 / 24 / 23.98)  
 1080i (60 / 59.94 / 50)  
 720p (60 / 59.94 / 50)

## Specifications

Model		BM-U325MD
Display	Size	31.5 inches
	Resolution	3840×2160
	Aspect Ratio	16:9
	Color Depth	10bit 1.073G colors
	Signal Process	18bit
	Color Gamut	100% DCI-P3; 79% Rec.2020
	Viewing angle	H/V 178/178
	Backlight	2304 zones Mini-LED
	Brightness	1500nits
	Contrast	1,000,000:1
Input	SDI	12G/6G/3G/HD-SDI ×4
	HDMI	HDMI 2.0 ×1
	UMD	RS485×1
	GPI (Tally)	RS485×1
	Ethernet	RJ45×1, 1000M
	USB	USB-A×1 – 3DLUT & Firmware
Output	SDI	12G/6G/3G/HD-SDI ×4
	Analog audio	3.5mm headphone + Speaker
	UMD	RS485×1
General	AC Input	AC 100-240V 50/60Hz
	Power	≤200W
	Working environment	0°C - +40°C; 10% - 90%
	Storage environment	- 15°C - + 60°C; 10% - 90%
	Dimensions	753.5×490×111.1mm
	Weight	16kg

