



Professional Monitor with NDI®



BM-215-NDI
21.5-inch QLED, 100% DCI-P3 WCG



BM-245-NDI
23.8-inch QLED, 100% DCI-P3 WCG

Features

FHD Wide Color Gamut QLED Panel

The NDI® monitors adopts FHD QLED panel, 100% DCI-P3 coverage Wide Color Gamut, 400nits backlight, 1000:1 contrast for professional productions.

BM-215-NDI	21.5-inch	1920x1080	400nits	100% DCI-P3
BM-245-NDI	23.8-inch	1920x1080	400nits	100% DCI-P3

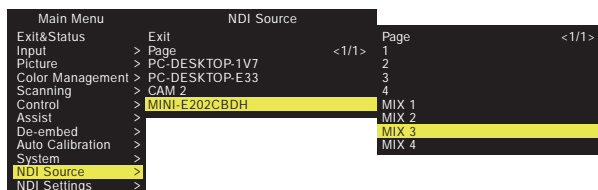
NDI®, SDI and HDMI

Support high bandwidth NDI® sources up to 4K 2160p30, and decoded to 3GSDI output. In addition, the monitors have 3GSDI 2-in 1-loop, and HDMI 2.0 4K 2160p60 input. The NDI®, SDI and HDMI sources can be PIP or PBP displayed simultaneously.



NDI® Sources Auto Detect and Discover Server Support

All NDI® sources will be auto detected when the monitor is connected to NDI® network. Supports Discover Server to pull NDI® sources from different IP segments.



NDI® Low Bandwidth Mode Support

Switch on the Low Bandwidth mode of the NDI® monitors to display low bandwidth prvw channel of the NDI® source.

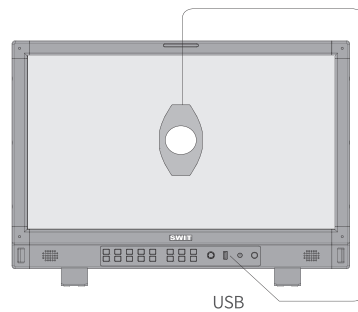


NDI® Embedded Audio Meters Display

Display 2 channels Audio meters that embedded into NDI® sources.

3DLUT Auto Self-Calibration

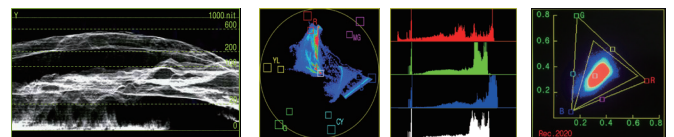
Built-in calibration software, supports X-rite i1 and JETI Specbos 1211 probes directly plug into monitor USB port to auto calibrate. Calibration time: X-rite i1: 15min; Specbos1211: 45min. Calibration result: $\Delta E < 1.0$



Built-in 3DLUT calibration software, Directly connect color sensor probe to monitor USB port, and the monitor will calibrate itself automatically.

Video Assist Patterns

Waveform and single line selection, Vector scope, Histogram and Color Gamut patterns, supports multiple display position, size and color selection for the patterns.



Y/Cb/Cr/R/G/B Waveform with nits Support single line waveform Vector Scope R/G/B/Y Histogram Rec. 709/2020 Color Gamut Pattern

Others

HLG/PQ/S-log3 HDR and Gamma 1.0/1.8/2.2/2.4/2.6 SDR EOTFs; Rec.709 / DCI-P3 / Rec.2020 color gamut selection; User 3DLUT cubes upload by USB; Focus assist, R/G/B/mono, False color, Zebra, Freeze frame; 15:9, 14:9, 13:9, 4:3, 2.35:1, 2:1, 1.85:1 and User defined markers; TSL 3.1/4.0 UMD and text TALLY display; On-board V-mount battery plate (Gold mount for option); GPI control and webserver IP control, USB firmware updates.



- ◆ Quick Select NDI® Sources
- ◆ Built-in NDI® to SDI Decoder
- ◆ 100% DCI-P3 WCG QLED Panel
- ◆ 3DLUT Self Calibration, $\Delta E < 1.0$
- ◆ Professional Monitor Tools

Video Formats

NDI®

4096 × 2160p (30 / 29.97 / 25 / 24 / 23.98)
 3840 × 2160p (30 / 29.97 / 25 / 24 / 23.98)
 2048 × 1080p (60 / 59.94 / 50 / 30 / 29.97 / 25 / 24 / 23.98)
 2048 × 1080i (50 / 59.94 / 60)
 1080p (60 / 59.94 / 50 / 30 / 29.97 / 25 / 24 / 23.98)
 1080i (60 / 59.94 / 50)
 720p (60 / 59.94 / 50)

NDI® Decoded to SDI OUT

2048 × 1080p (60 / 59.94 / 50 / 30 / 29.97 / 25 / 24 / 23.98)
 2048 × 1080i (50 / 59.94 / 60)
 1080p (60 / 59.94 / 50 / 30 / 29.97 / 25 / 24 / 23.98)
 1080i (60 / 59.94 / 50)
 720p (60 / 59.94 / 50)

SDI IN 1/2 and LOOP

2048 × 1080p (60 / 59.94 / 50 / 30 / 29.97 / 25 / 24 / 23.98)
 2048 × 1080i (50 / 59.94 / 60)
 1080p (60 / 59.94 / 50 / 30 / 29.97 / 25 / 24 / 23.98)
 1080i (60 / 59.94 / 50)
 1080psf (30 / 29.97 / 25 / 24 / 23.98)
 720p (60 / 59.94 / 50)
 480i (59.94) 576i (50)

HDMI IN (2.0)

4096 × 2160p (60 / 59.94 / 50 / 30 / 29.97 / 25 / 24 / 23.98)
 3840 × 2160p (60 / 59.94 / 50 / 30 / 29.97 / 25 / 24 / 23.98)
 1080p (60 / 59.94 / 50 / 30 / 29.97 / 25 / 24 / 23.98)
 1080i (60 / 59.94 / 50)
 720p (60 / 59.94 / 50)

Specifications

Model	BM-215-NDI	BM-245-NDI
Display		
LCD size	21.5 inches	23.8 inches
Resolution	1920 × 1080	1920 × 1080
Aspect Ratio	16:9	16:9
Color Depth	10bit (8+2FRC)	10bit (8+2FRC)
Color Gamut	100% DCI-P3	100% DCI-P3
Viewing angle	H/V 178/178	H/V 178/178
Brightness & Contrast	400nits, 1000:1	400nits, 1000:1
Interfaces		
NDI®	High bandwidth 4K NDI® RJ45 × 1	
NDI® to SDI OUT	3G/HD-SDI output × 1	
SDI IN1 & IN2	3G/HD-SDI input × 2	
SDI LOOP	3G/HD-SDI loop out × 1	
HDMI IN	HDMI 2.0 input × 1	
Audio OUT	3.5mm headphone + Speaker	
UMD	RS485 input & output	
GPI (Tally)	RS485 input	
USB-A	Calibration Probe, 3DLUT upload & Firmware upgrade	
General		
AC Input	AC 100-240V, 50/60Hz, 0.8A	
DC Input	DC 12-17V, V-mount plate	
Power	≤ 45W	
Working environment	0°C - +40°C; 10% - 90%	
Storage environment	- 15°C - + 60°C; 10% - 90%	
Dimensions	530.6 × 364.3 × 74.2mm	580.9 × 392.3 × 73.6mm
Weight	6.05kg	6.7kg

